

Applying Analytics to contribute to the SDGs

Parvathy K Krishnakumari

CTO, Analytics for a Better World Institute

12th October 2023



**Analytics for a
Better World**



Analytics for a Better World

Founding partners:



UNIVERSITEIT
VAN AMSTERDAM

ORTEC
OPTIMIZE YOUR WORLD

Jointly empowering Nonprofits to apply Analytics towards the

SUSTAINABLE DEVELOPMENT GOALS



My Journey



BTech in Electrical and Electronics Engineering

Cognizant



MTech in Energy Management
Bangalore

Professional Doctorate in Data Science
Eindhoven University of Technology
the Netherlands



Researcher at IISc Bangalore and IIT Kanpur
Data Analytics in Energy Sector

Solar Energy Research Institute of
Singapore
Research on PV Systems Data



Analytics for a Better World

CTO and Lead Data Scientist



THE WORLD BANK
IBRD • IDA | WORLD BANK GROUP



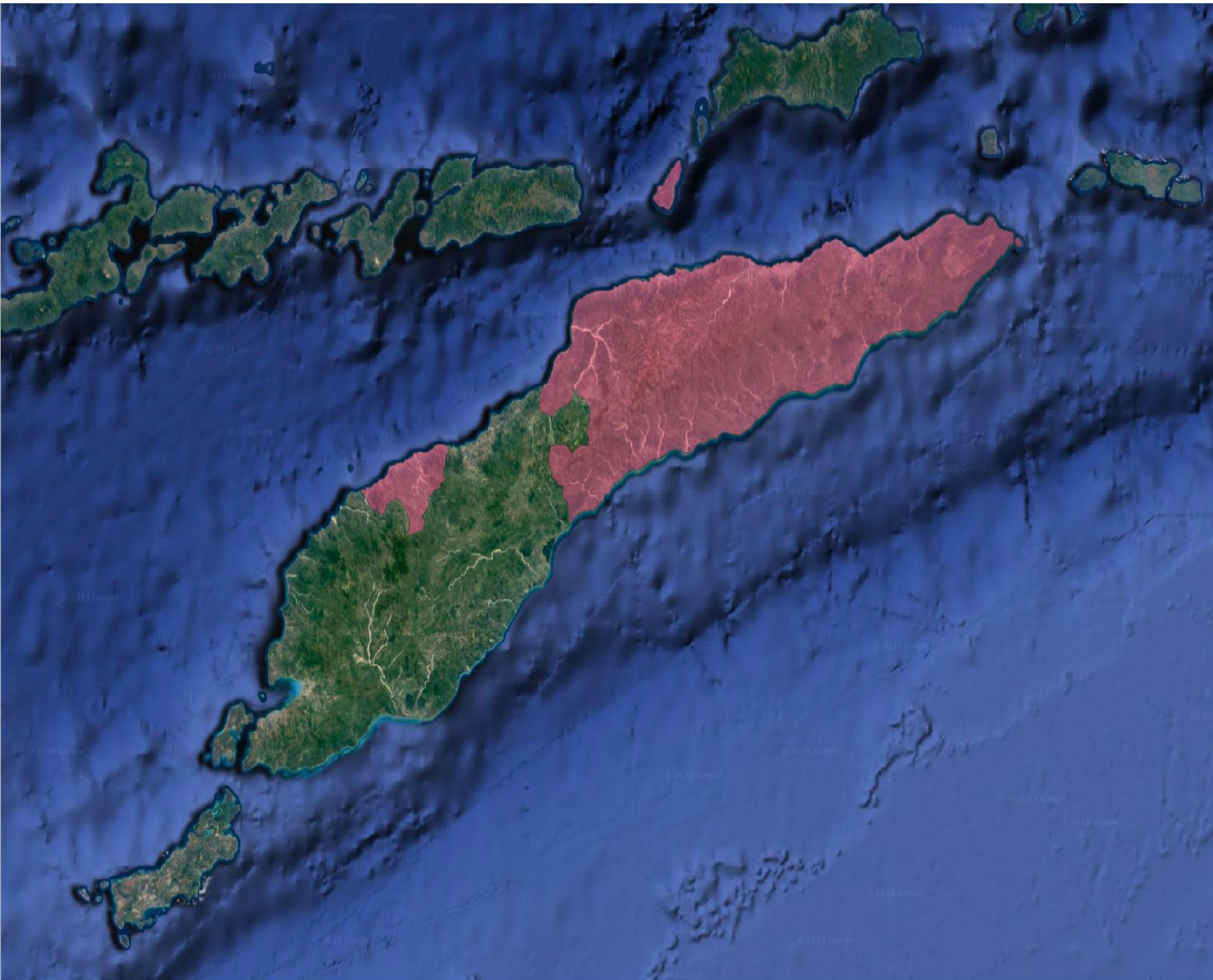
Consultant/Advisor

slido



How many minutes to reach the nearest healthcare provider?

① Click **Present with Slido** or install our [Chrome extension](#) to activate this poll while presenting.



Research article | [Open access](#) | Published: 30 September 2016

"I go I die, I stay I die, better to stay and die in my house": understanding the barriers to accessing health care in Timor-Leste

Jennifer A. Price [✉](#), Ana I. F. Sousa Soares, Augustine D. Asante, Joao S. Martins, Kate Williams & Virginia L. Wiseman

BMC Health Services Research **16**, Article number: 535 (2016) | [Cite this article](#)

From one remote area, patients were carried 16 km to the nearest health post, travelling for 9–11 hours.

"We start walking at 3 am and arrive [at the health post] 12 midday. Therefore most pregnant women have the delivery process at home."

Physical Access critical across the SDGs

SUSTAINABLE DEVELOPMENT GOALS

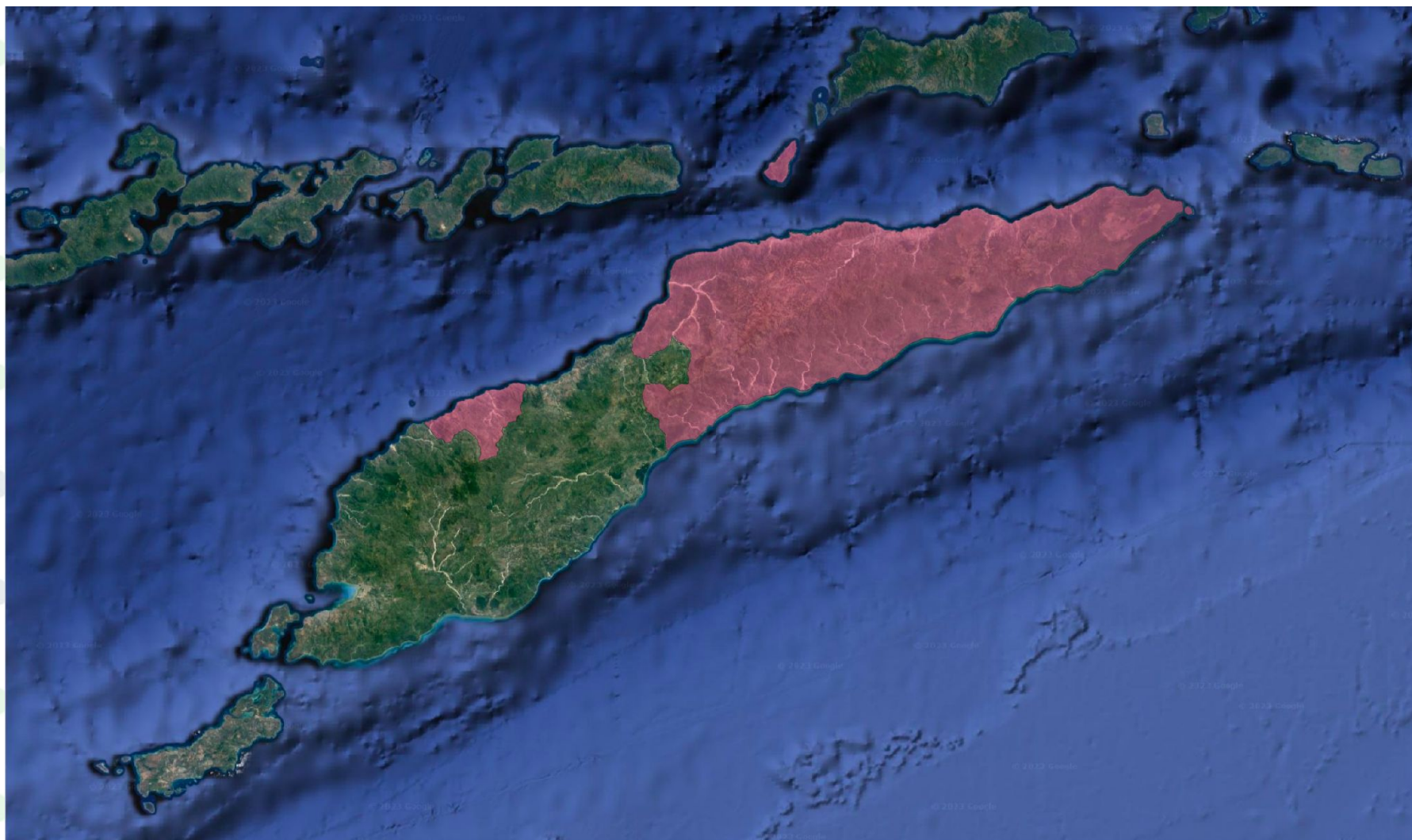


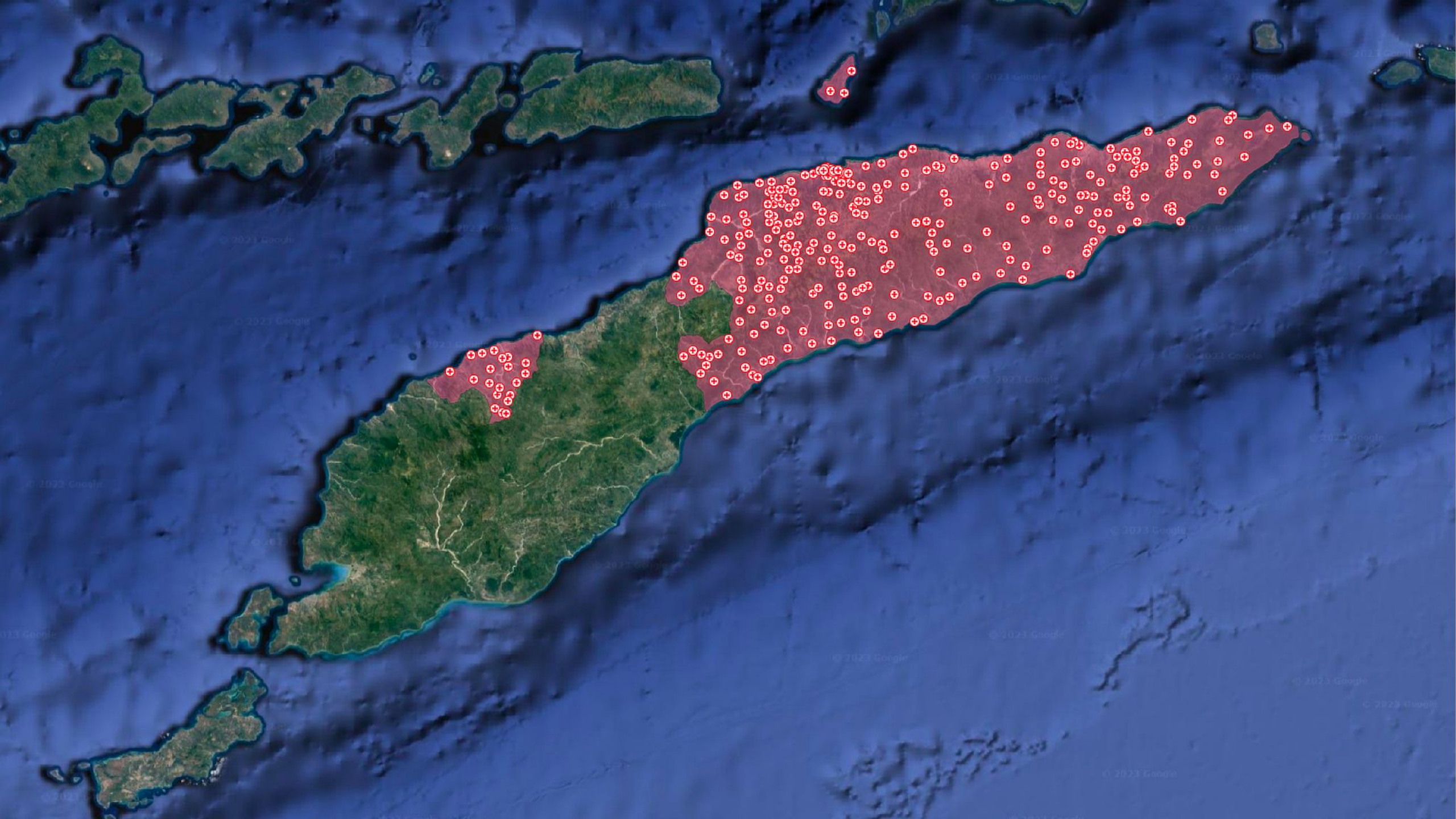
Access to all-season roads

Access to clean and safe drinking water

Access to Hospitals, Schools, etc...

Timor-Leste Public Expenditure Review

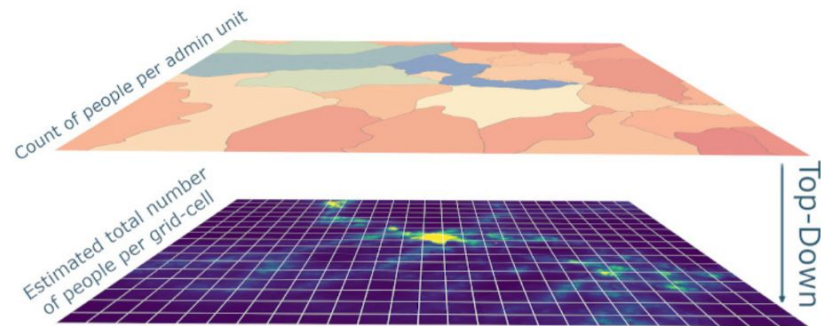




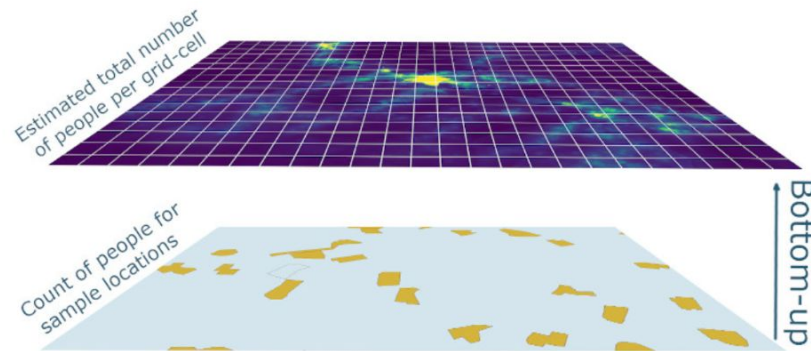
- Are you interested in a specific country where it has either been many years since the last census and simple projections from this baseline may be highly uncertain, or the most recent census did not cover the entire country due to inaccessibility/insecurity?

- Are you interested in global/continental coverage and/or changing population numbers over time?
- Do you need population totals to match census counts, official projections or UN estimates at national or sub-national scales?

If your answer to any questions in the red box were *yes*, then it is likely that our 'top-down' datasets are best for you. If you answered *yes* to the question in the blue box, then our set of 'bottom-up' datasets may make sense for you. Moreover, if you have access to new population estimates or survey data and want to experiment with using them to create your own simple and rapid gridded datasets, then you may want to consider our [rapid population mapping tools](#).

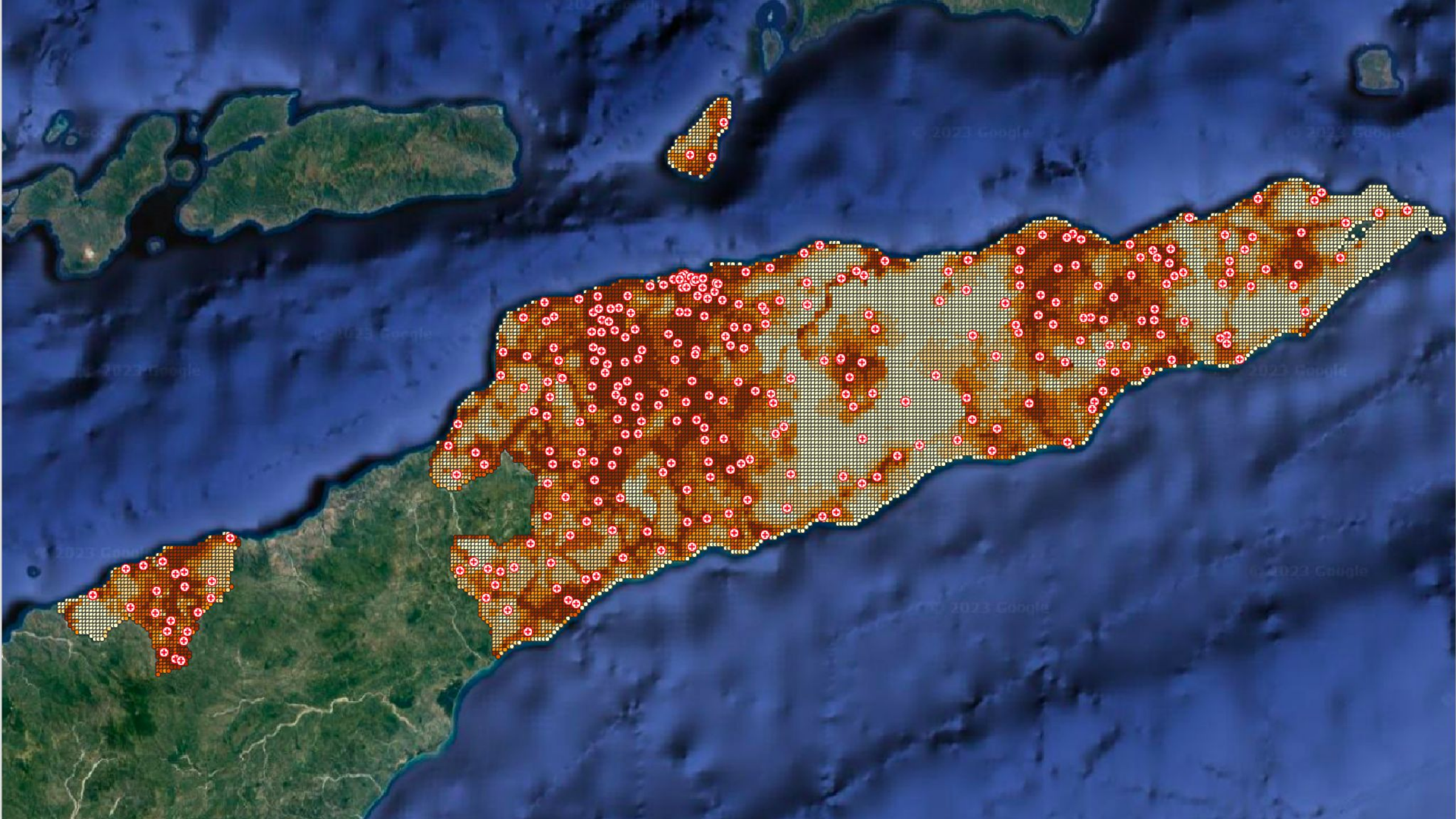


Top-down datasets



Bottom-up datasets

WorldPop is based at the **University of Southampton** and maps populations across the globe. Since 2004, with partnerships with governments, UN agencies and donors, they have produced almost 45,000 datasets, complementing traditional population sources with dynamic, high-resolution data for mapping human population distributions, with the ultimate goal of ensuring that everyone, everywhere is counted in decision making.

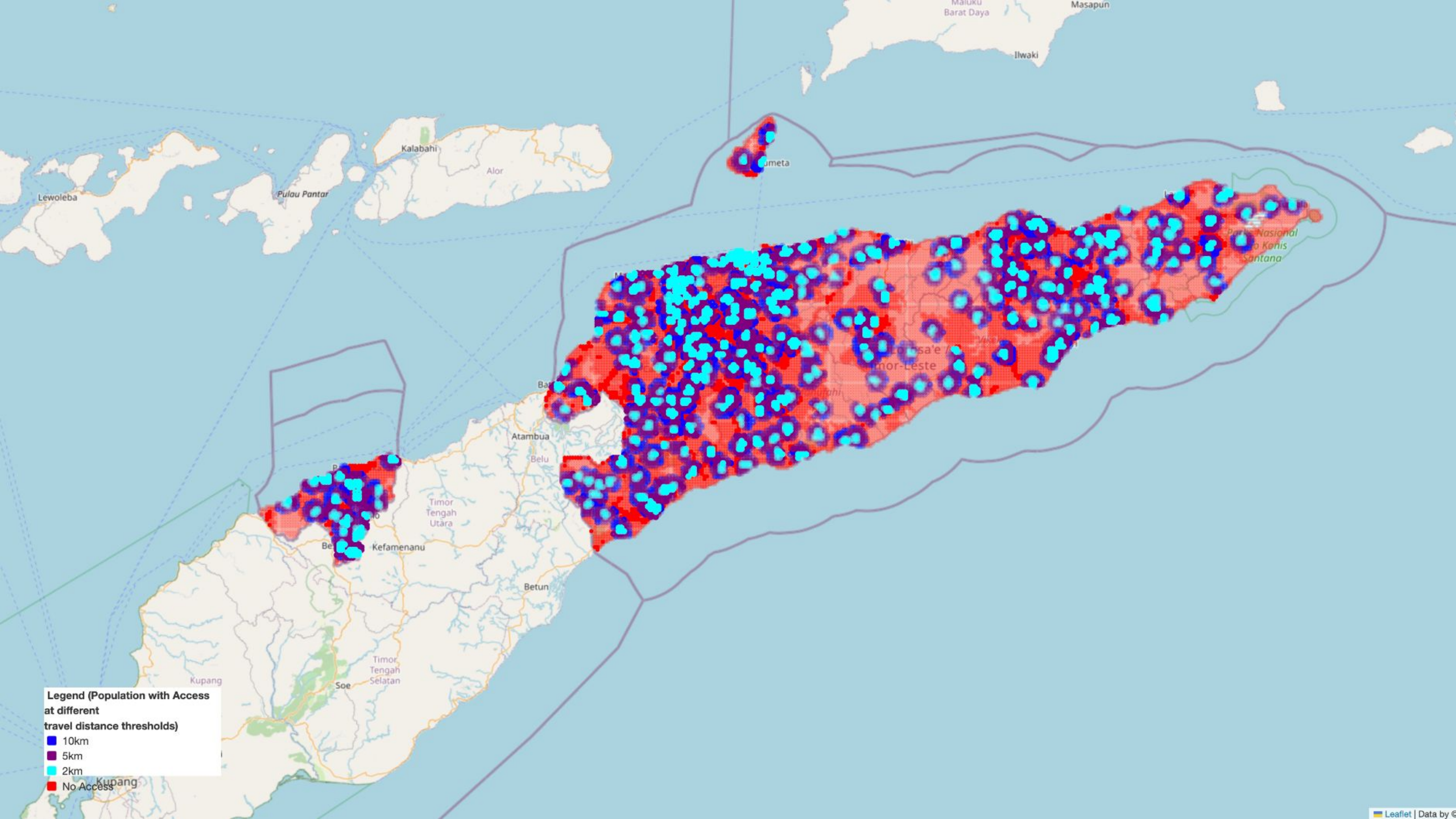


Challenges in mapping travel distance/time



- Only 8% of core roads were in fair condition, with the remaining in poor (22%) or very poor condition (70%).
- Rural roads are also generally in poor condition. Frequent landslides and road closures caused by intense rainfall and geotechnical instability in mountainous areas compound the poor condition of the roads.

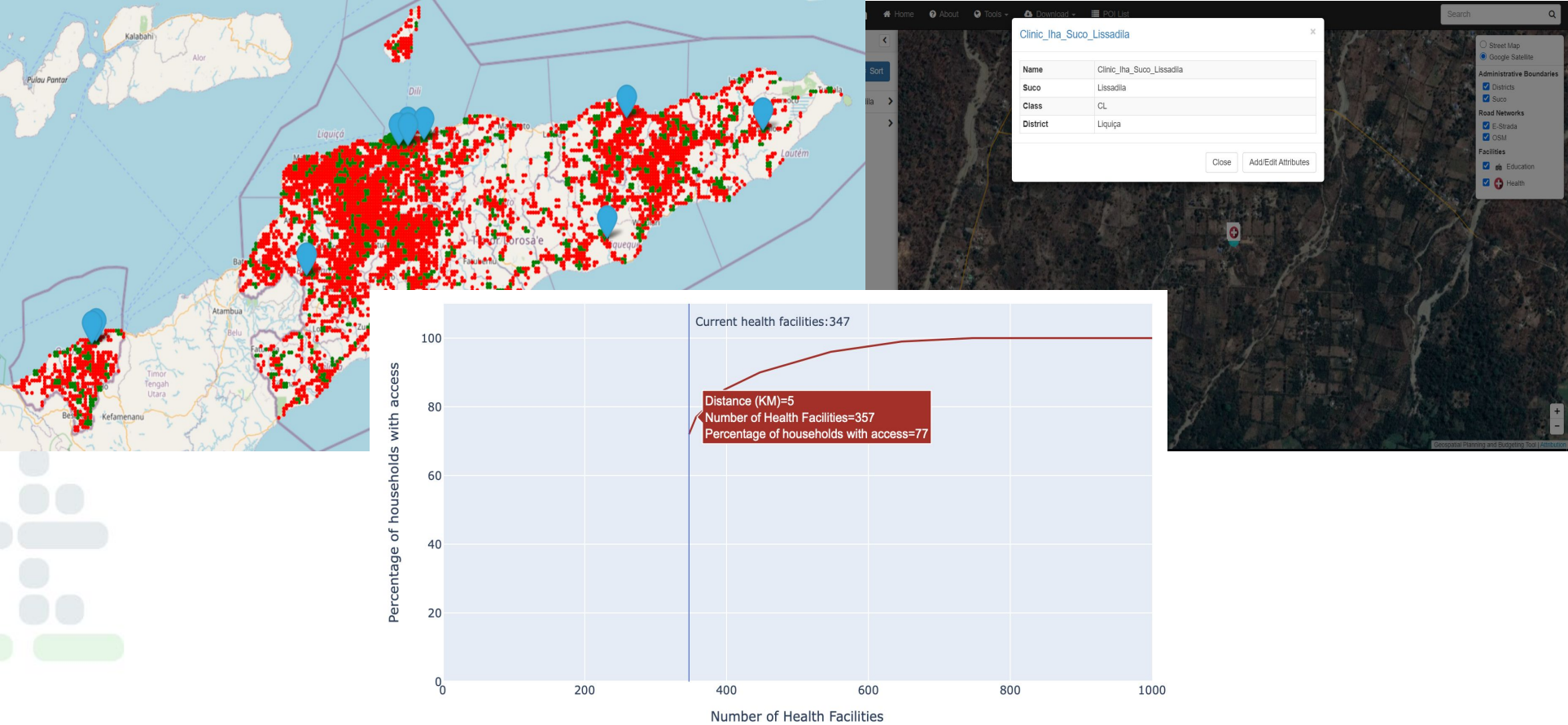




Legend (Population with Access at different travel distance thresholds)

- 10km
- 5km
- 2km
- No Access

Applying Optimization Algorithms



Beyond AI and Digital Platforms



Beyond AI and Digital Platforms

tds Published in Towards Data Science

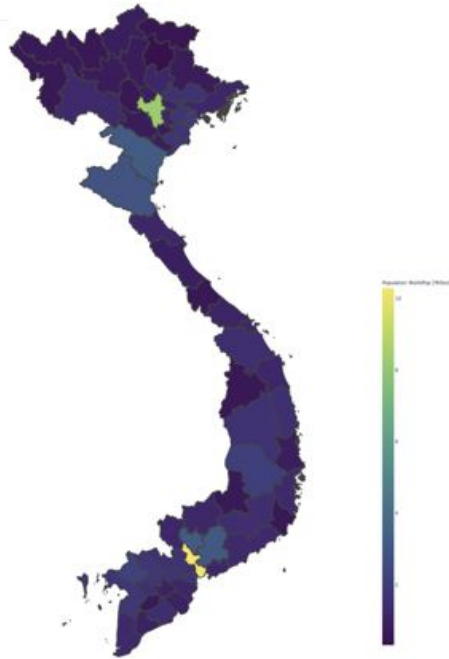
Parvathy Krishnan
Nov 16, 2021 · 8 min read · Listen

PYTHON HANDS-ON TUTORIAL

Visualising Global Population Datasets with Python

Summary statistics of geospatial raster and vector datasets bounded by polygon shapefiles

This work has been done entirely using publicly available data, and was co-authored with Kai Kaiser. All errors and omissions are those of the author(s).



WorldPop Population in millions for the municipalities in Vietnam (Source-Authors)

Parvathy Krishnan
Aug 13, 2021 · 5 min read · Listen

SPATIAL DATA SCIENCE

3 Open Datasets to hone your Spatial Data Science skills

with examples of real-world applications



Photo by NASA on Unsplash

Data-driven and Data-informed decision-making is now an integral part of private and public sector organizations. Unlocking the power of spatial data using specialized tools and techniques adds an additional level of insight and can create a significant impact on this decision-making process across

tds Published in Towards Data Science

Kai Kaiser
Feb 11 · 13 min read · Listen

Local climate analytics: Health Facility Rain Exposure in Vietnam

Processing geospatial satellite imagery data on a cloud-based Jupyter Notebook Python Environment to measure rain exposure of key public infrastructure facilities

This work has been done entirely using publicly available data, and was co-authored with Anh Tuấn Phan, Parvathy Krishnan, and Hieu Danh Luu. All errors and omissions are those of the author(s).

"Water, water everywhere and not a drop to drink"

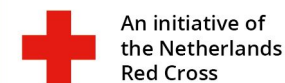
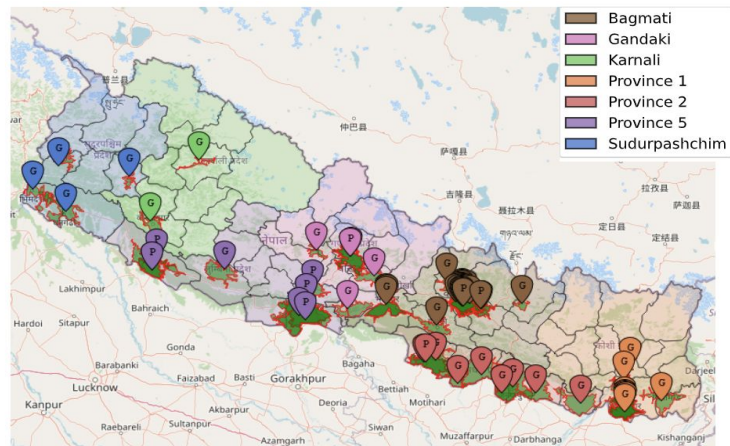
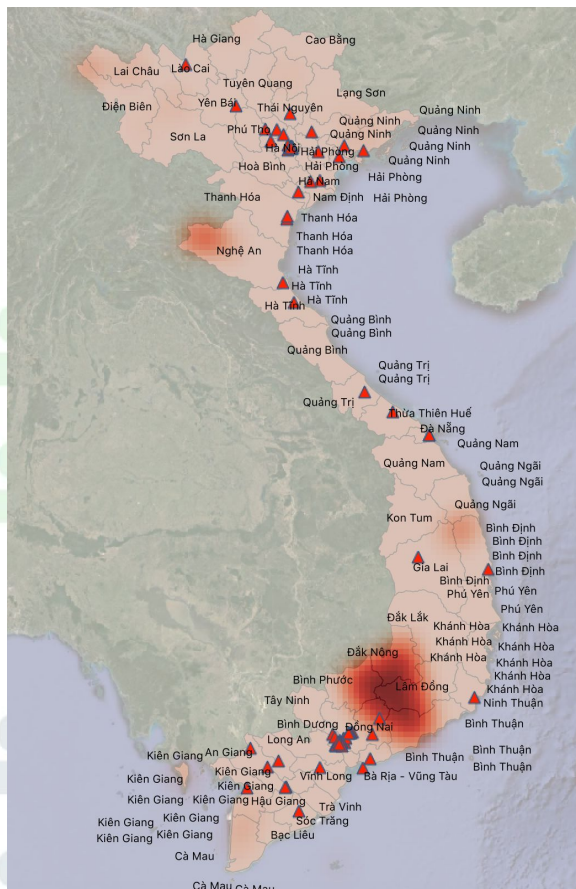
Samuel Taylor Coleridge's poem, *The Rime of the Ancient Mariner*



Collaborating to create impact



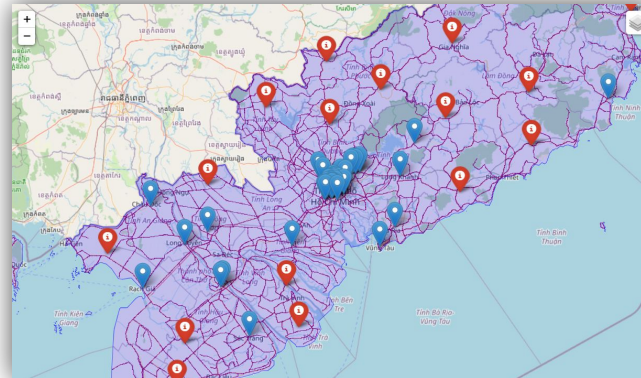
Improving access to healthcare, water and optimizing garbage collection



Analytics accelerates the mission of nonprofits by



Speeding up plastic removal from the great pacific ocean



Improving access to healthcare and WASH facilities



Combating hunger by optimizing food aid baskets and supply chains



Reducing poverty by optimizing farmer's purchasing of cattle feed



Welcome Fellows!

ABW 2023 Fellowship Program

>100 Fellows and 55 organizations

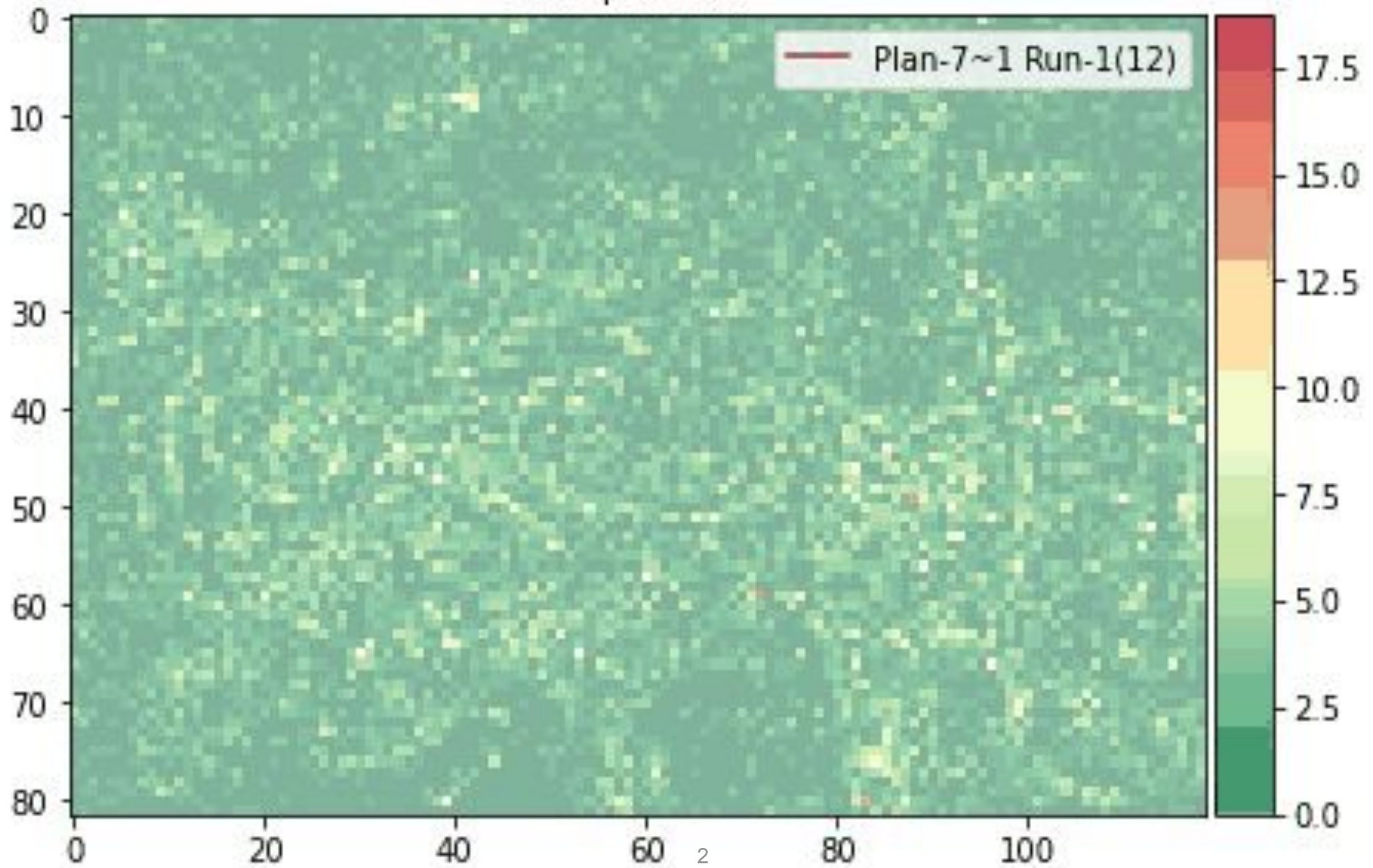
Trained 200+ nonprofit employees on analytics skills

STEERING STRATEGY

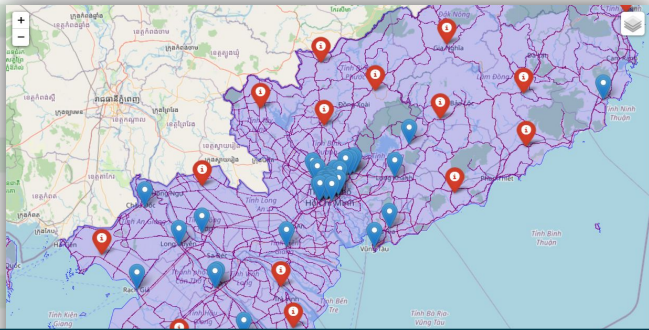


- **Hotspot prediction** using computational model to place the cleanup systems
- Finding the **optimal route** through the Great Pacific Garbage Patch through:
 - Looking **7 days ahead**
 - Considering the **plastic density**
 - Including **practical considerations**, like making U-turns

Sample Path



We increase the impact of our nonprofit partners through the following domains



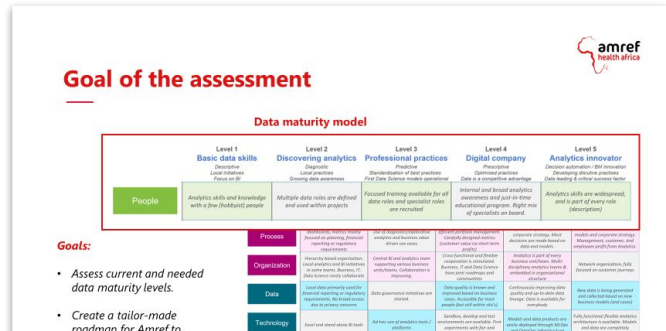
Optimizing decisions around facility location, routing and supply chains



Impact improvement by applying machine learning to (unstructured) data



Increase donor contributions by applying marketing analytics techniques



Increase analytics capability by maturity scans and strategic roadmaps

Nonprofit projects and collaborations



THE WORLD BANK
IBRD • IDA | WORLD BANK GROUP



Growing and exploring:



Research and business Partners and Contributors

Founding
partners:



UNIVERSITEIT
VAN AMSTERDAM

In-kind contributors:



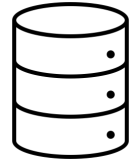
Deutsche Post DHL
Group



How to contribute?



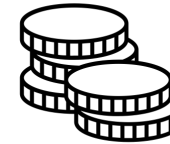
Skills



Data



Technology



Funding

Analytics for a Better World

Knowledge Sharing



Implementation



Research



Our mission:

Apply analytics to contribute to the Sustainable Development Goals

Our Core Team



Parvathy Krishnan

- CTO at ABW
- Consultant for World Bank and UNDP



Dick den Hertog

- Science to Impact co-director ABW
- UvA Professor of Operations Research



Dimitris Bertsimas

- Science to Impact co-director ABW
- MIT Professor of Operations Research



Robert Monné

- Managing Director at ABW



Kate M. Henry

- Lead of operations and project managers at ABW



Britt van Veggel

- PhD student
- TU Delft Applied Mathematics graduate



Joaquim Gromicho

- UvA Professor of Business Analytics
- Researcher at ABW
- Science officer at ORTEC



Marta Bordignon

- Outreach and Event Manager at ABW



Claudia Orellana-Rodriguez

- Data Scientist in ABW
- PhD in Machine Learning

Supervisory board: Marc Salomon (Dean UvA ABS), Michael van Duijn (CEO ORTEC), Frans van Helden (MD ORTEC), Franka Rolvink Couzy (Self-Employed)

Launch magazine



Unsplash

Contact Us:

hello@analyticsbetterworld.org or
www.analyticsbetterworld.org

**Analytics for a
Better World**



Time for Questions?

Analytics for a Better World